



## 6-in-1 v10 Installation Guide - Single-User Standalone Version

Installation Guide v059 - Feb 28, 2010.

If you encounter difficulties during the install, please check to see if these instructions, or the 6-in-1 v10 installer have been updated.

They are available on our website: <http://www.lacknergrou.com>

For technical support, please contact us at [support@lacknergrou.com](mailto:support@lacknergrou.com) or phone us at 412.279.2121.

The migration from v6 to v10 is straightforward, and we have designed the process so that you can feel comfortable doing the installation yourself. This install guide is designed to walk you through the six steps, which for most users will take somewhere between 35 and 60 minutes.

To install the 6-in-1 v10 version for 2010 you will need to install one component from a CD, then download and install a second component (6-in-1 v10), and finally perform a small number of steps to migrate your data. If you have a large number of transactions in your v6 files, you can assume that the migration will take about 30 minutes plus an additional 30 minutes for every 10,000 transactions.

This document outlines a straightforward and specific sequence of steps that you must follow. By following these instructions, you will increase the likelihood of a smooth upgrade and decrease your need for additional support. We have worked hard to make this process go as smoothly as possible.

**Important Note: Once you have completed the migration process, you should add or edit data *only* in v10.**

These instructions are designed for customers who run 6-in-1 on a standalone computer (i.e., not sharing 6-in-1 data with other users over the network). You may install 6-in-1 v10 on your current computer, if it meets the technical requirements, or you may install it directly onto a new computer.

The basic steps you need to perform are:

1. Run the FileMaker Pro engine installer from the CD
2. Download the new 6-in-1 v10 software installer
3. Run the 6-in-1 v10 software installer
4. Prepare your 6-in-1 v6 data for export using the v6 version of 6-in-1
5. Run the data conversion & import process in the new v10 version of 6-in-1
6. Verify your data

You will need at least 5 gigabytes of available hard drive space to install the 6-in-1 v10 program components.

If you have questions or difficulties with the installation, please call us at 412/279-2121 and we will return your call as quickly as possible to schedule a time for us to help walk you through the process.

---

### 1. **Run the FileMaker Pro engine installer from the CD**

*Before you begin, be sure that you have quit all open applications, including 6-in-1 v6.*

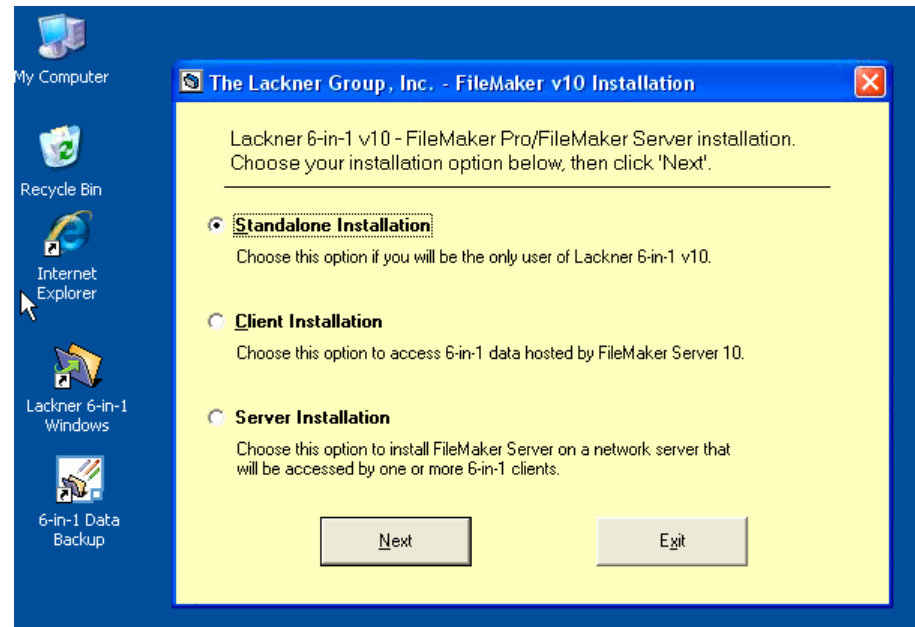
The v10 version of 6-in-1 uses a new FileMaker Pro engine, which must be installed before you can run the data conversion routines. You should receive by mail a CD entitled "FileMaker 10". Insert that CD into your computer and follow the on-screen installation instructions. This process will add FileMaker Pro v10 components to

your Program Files directory in Windows (or to your Applications folder on your Mac).

When you place the CD in the drive, you should automatically see the dialog on the right.

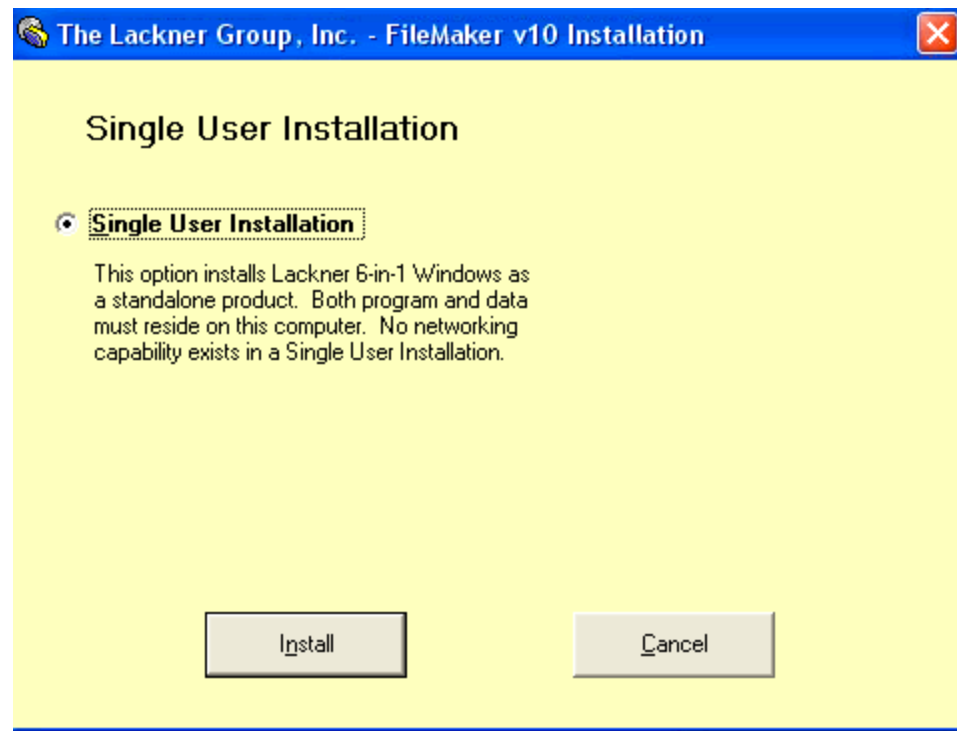
For single-user installations, leave the default setting of **Standalone Installation**.

*Note: If you are moving your 6-in-1 v6 to a new computer running 6-in-1 V10, then perform this step on your new computer.*



Click the next box, and you will see a confirmation dialog that looks like this.

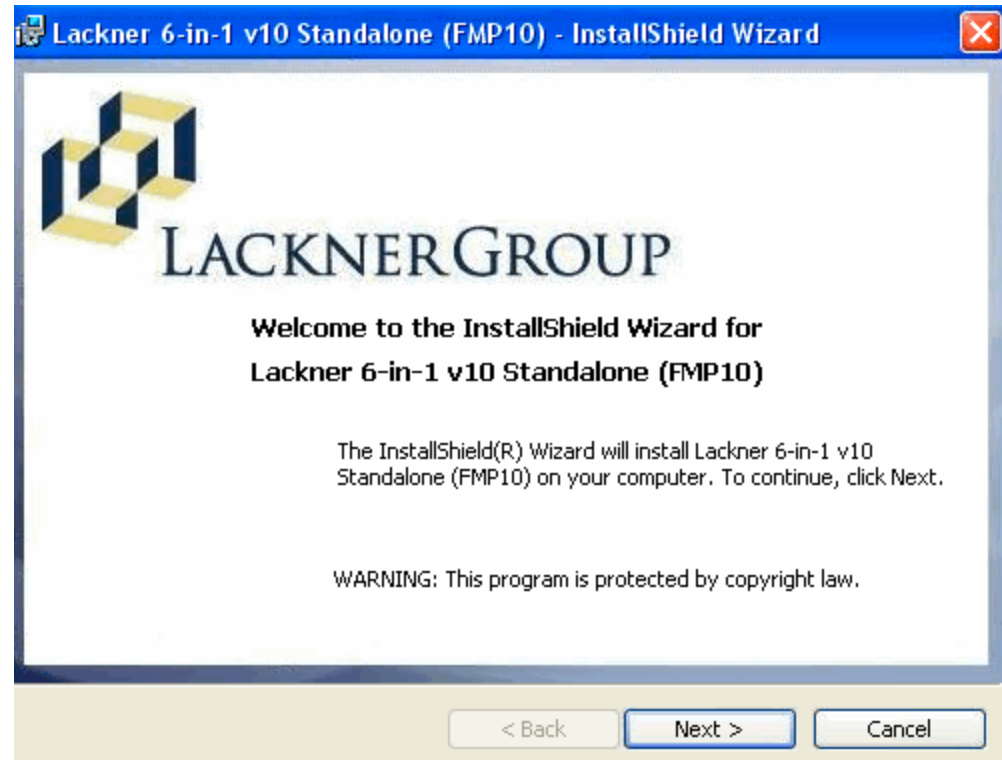
Click the Install button. You will see some progress bars and messages regarding the extraction of the Lackner 6-in-1 v10 Standalone (FMP10) installer.



When extraction is finished, you will see the installation wizard screen.

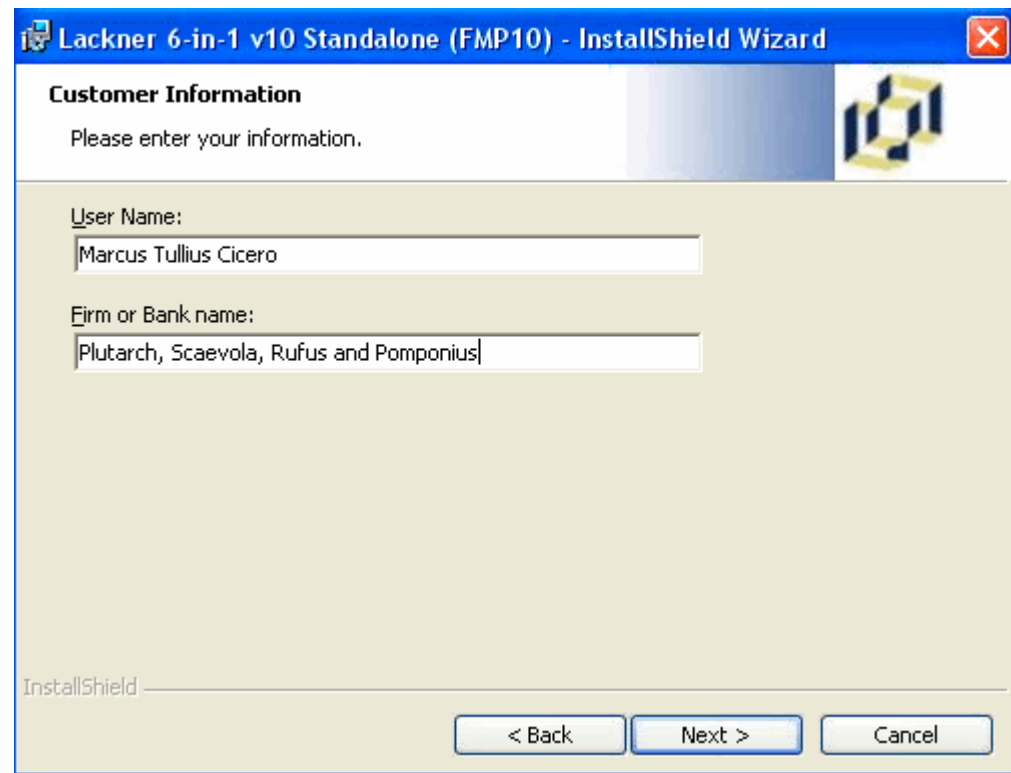
Press the NEXT button, and read the License Agreement.

Click the "I accept" button and then the NEXT button



Now enter your User Name and Firm Name.

Then press the **Next** button.



**Lackner 6-in-1 v10 Standalone (FMP10) - InstallShield Wizard**

**Customer Information**

Please enter your information.

User Name:  
Marcus Tullius Cicero

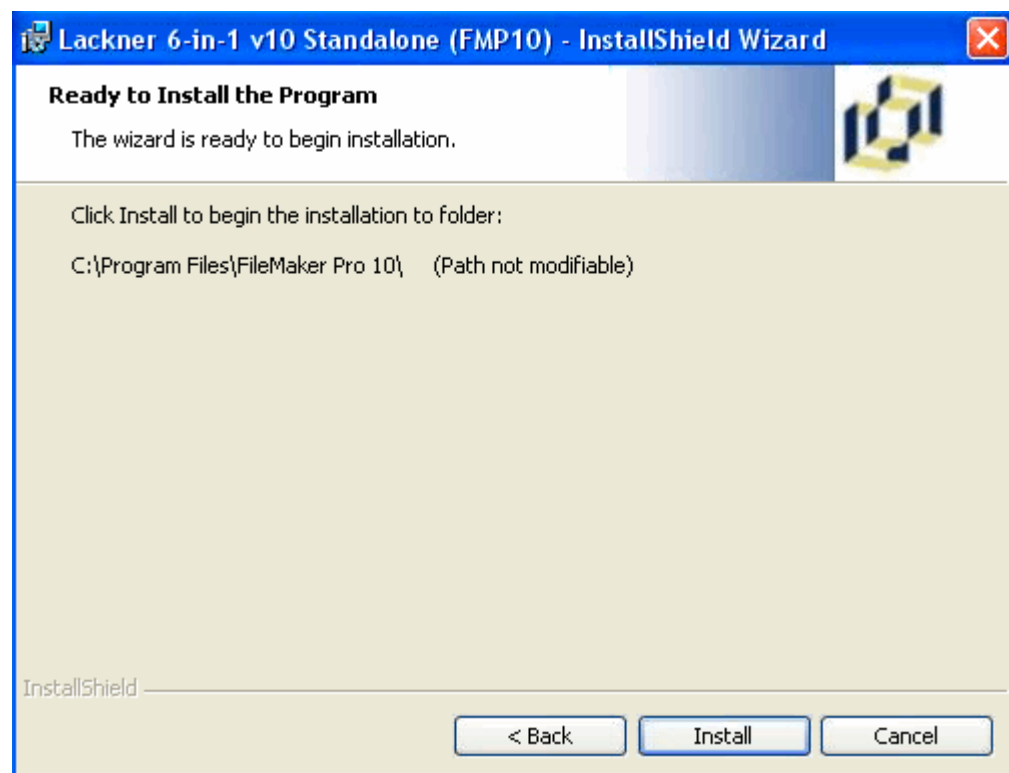
Firm or Bank name:  
Plutarch, Scaevola, Rufus and Pomponius

InstallShield

< Back   Next >   Cancel

Then click the **Install** button.

After you press the **Install** button, the installation wizard will install the appropriate components and display a dialog that has completed the installation. Press **Finish** to complete this step.



At this point, a new **Estate10** directory has been created in your C:\ volume, and the database engine components are installed in a new FileMaker Pro 10 directory inside your Program Files directory.

---

## 2. Download the new 6-in-1 v10 software installer

You must first download the 6-in-1 v10 from our website. We choose to keep this package on our website rather than on the CD so we can make minor changes as necessary to address any issues that might arise during the installation.

Click the link below to start the download. Save the download to a known location on your hard drive.

[Download 6-in-1 for Windows 2009-053-V10](#)

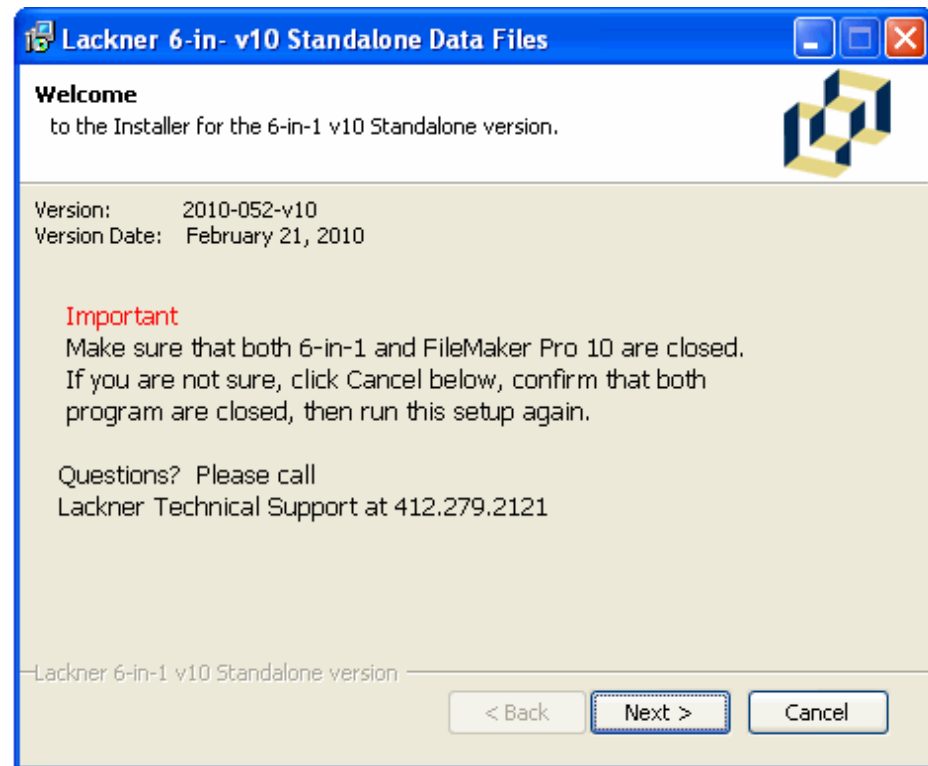
### 3. Run the 6-in-1 V10 software installer

The software installer will add to your existing v6 installation several utility files that are used during the conversion process, as well as a full set of files for v10. None of your existing data will be removed, deleted or changed during this process. Once you have completed the migration process from v6 to V10, you should **NOT** add or edit data in v6.

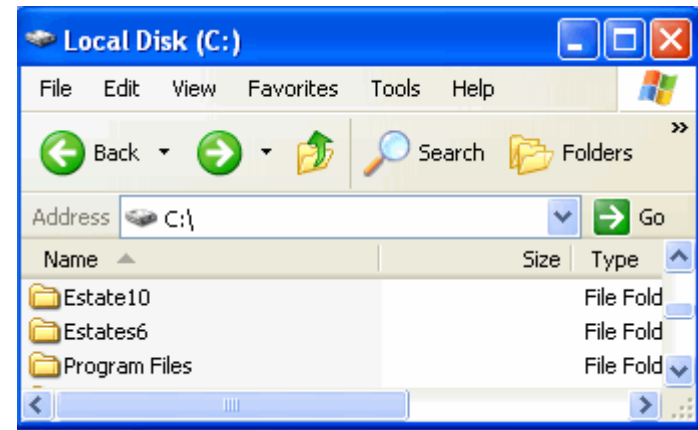
Step #3 simply decompresses the appropriate files and puts them in the right place on your hard drive. It does not convert files or copy data yet; that will occur in the next steps.

To launch the 6-in-1 v10 installer, simply locate the file you downloaded in Step #2, open it, and follow the instructions.

Press **Next** and then **OK** on the confirming dialog. You will see various files being copied between folders.

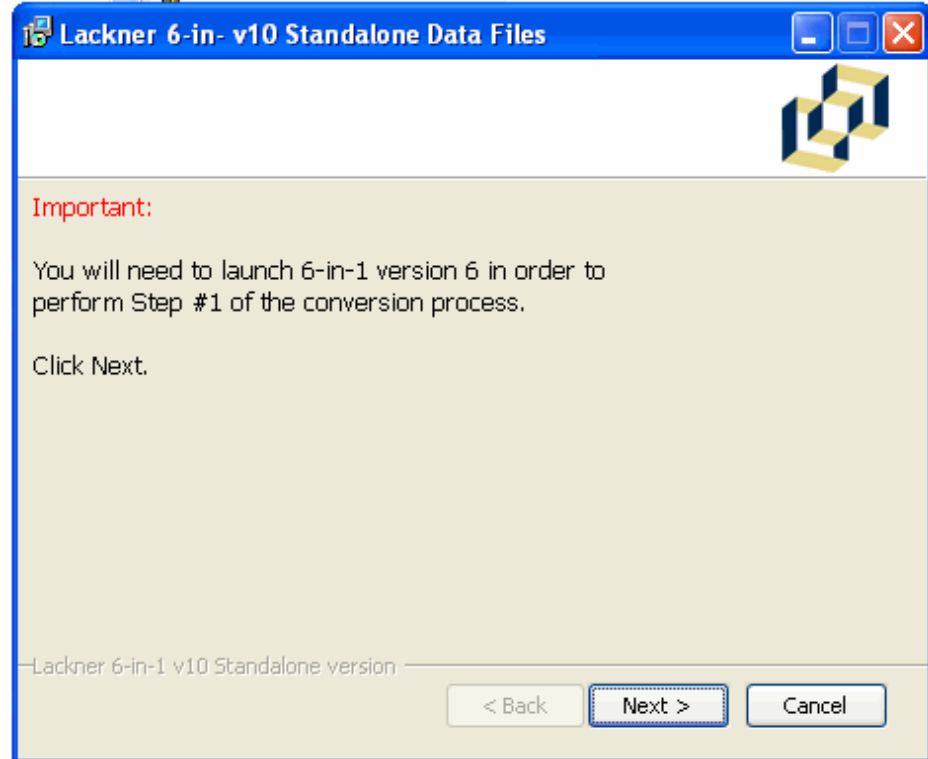


By default, the 6-in-1 v10 Installer will create an Estate10 directory at your root level. When you have completed the install your C: drive should look something like this:



At this point, the installation of the 6-in-1 V10 components is complete, and you are ready to begin the process of converting your data from v6 to V10.

Press **Next** to continue.

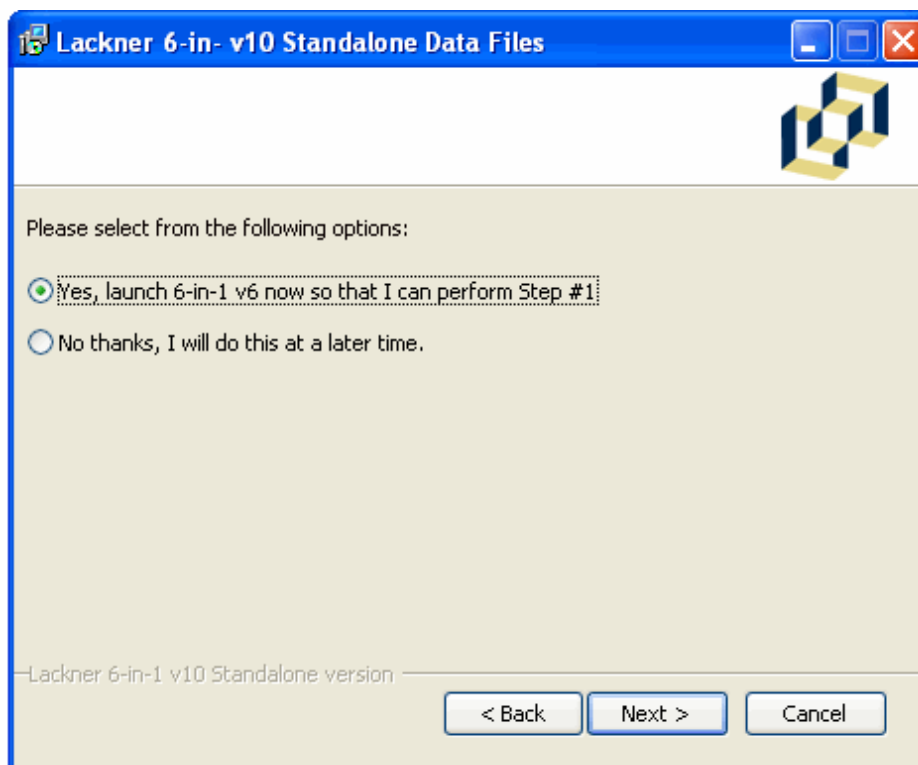


---

#### 4. Prepare your 6-in-1 v6 data for export using the v6 version of 6-in-1

The Installer will prompt you to open the 6-in-1 v6 application to begin Step #1 of the Conversion. Press **Next** to automatically open the v6 version of 6-in-1.

Now is a good time to make sure you have a good backup of your data before proceeding. Press QUIT, and then choose the BACKUP option. Although the conversion process does not modify your existing data, this is an excellent time to be sure you have an adequate backup.



At this point you have successfully finished installing the various components. The following steps prepare your data and perform the various migration and conversion processes. The following technical note will provide insight for those of you with a technical interest in what is happening under the hood. You may safely skip the following few paragraphs if you just want to move on with the process!

#### Technical Note

*The 6-in-1 system is based on the FileMaker Pro family of database products. The v6 version of 6-in-1 is based on FileMaker Pro 6, and the v10 version of 6-in-1 is based on FileMaker Pro 10. The v10 product incorporates new layouts to handle the 2009 forms and a variety of modifications to make the behavior consistent with the v6 product. In the abstract, there are two steps to the conversion:*

- 1 Convert the FileMaker Pro 6 files into FileMaker Pro 10 compatible file format*
- 1 Import the data from the converted FileMaker Pro 10 files into the new 6-in-1 V10 files*

*We have added an additional processing step that ends up saving time during conversion process:*

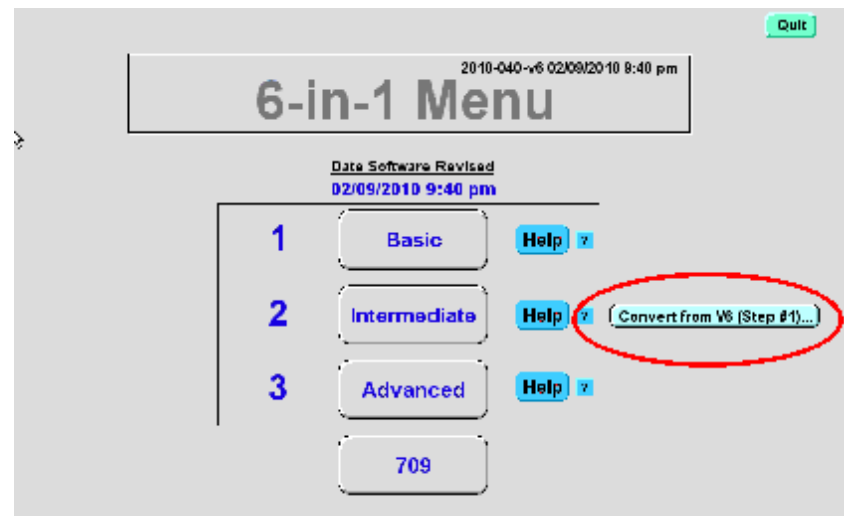
- 1. We export the data from 6-in-1 v6 into a set of simplified FileMaker Pro files that contain only the data, with no indexing or calculations or other complexity*
- 2. These simpler files are then converted from FileMaker Pro 6 format into FileMaker Pro 10 format*
- 3. The converted simple files now in V10 format are used as a data source for import into the production 6-in-1 V10 files*

*So the first step of the conversion to prepare the data is the step where the simple files get populated with your real data. Then in the next step there will first be a sequence of data conversion routines. They will display messages on screen showing the conversion process. This will be followed by a data import step for each of the files.*

To begin, open up your 6-in-1 v6 files in the usual way.

Note that there is now a new button on the right side of the layout labeled *Convert from v6 (Step #1)*...

Press the *Convert from v6 (Step #1)..* button.



You will now see the 6-in-1 Conversion layout with a button labeled **Step #1: Prepare Version 6 data for conversion**. Press that button.

Note: this button was previously labeled **Step #1: Import from Estates6**.

The conversion routine will now process all the files one by one. Note that the *Transact* file may take several minutes if you have a large number of transactions.

When this initial preparation process is done, you will be prompted to print a page summarizing the number of records in your v6 setup. Print that page.

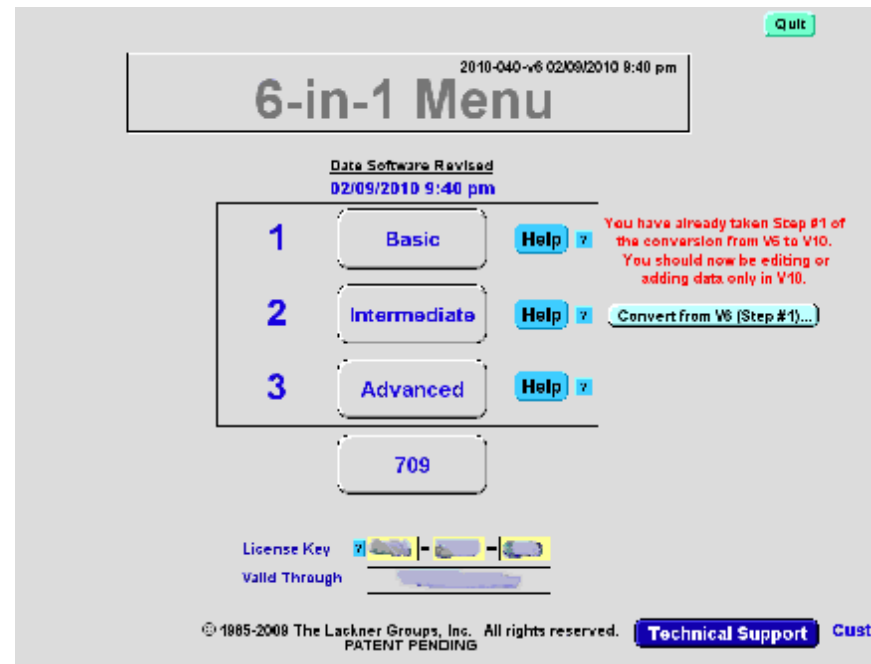
Now Press the **6-in-1 Menu** button to navigate

File #	Record Count	File Name	File #	Record Count	File Name	File #	Record Count	File Name
1		Banks	26		RJD	51		USF7_Whk
2		Uety1x02	27		UHD	52		US8_0_Whk
3		BorgT003	28		PAD	53		USF2002
4		UetyT004	29		PAF2002	54		US8_2003
5		BorgT005	30		PAF2003	55		USF2004
6		UetyT006	31		PAF2004	56		US8_2005
7		BorgT007	32		PAF2005	57		USF2006
8		UetyT008	33		PAF2006	58		US8_2007
9		Claimmak	34		PAF2007	59		USF2008
10		CU2009	35		PAF2008	60		USG
11		CTF2000	36		Transact	61		USG_Borg
12		CU2001	37		Transact	62		USG_Imm
13		CTF2005	38		UBorg	63		XXA
14		CU2006	39		UGen	64		XXB
15		CTF2007	40		USD	65		XXF2002
16		CU2008	41		US8_1_Acc	66		XX0_2003
17		IND	42		USF5_Acc	67		XXF2004
18		Macc008	43		US8_6_Acc	68		XX0_2005
19		MAF2002	44		USF7_Acc	69		XXF2006
20		MA0_2003	45		US8_0_Acc	70		XX0_2007
21		MAF2004	46		USF2_Whk	71		XXF2008
22		MA0_2005	47		US8_3_Whk	72		XX0
23		MAF2006	48		USF4_Whk	73		BorgStar
24		MA0_2007	49		US8_5_Whk			
25		MAF2008	50		USF6_Whk			

back to the 6-in-1 Menu layout.

Note that there is now a message on the right of your menu layout indicating that you have already completed step 1 of the conversion, and that you should no longer be adding or editing data in the v6 version.

Press the **Quit** button in the usual way. If you haven't made any changes to your files, you do not need to perform another backup at this time.

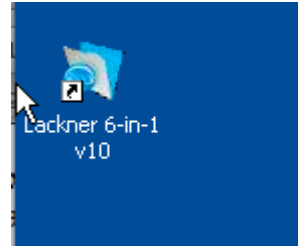


### Special Instructions if you are installing V10 on a different computer than your v6 computer

Inside your Estates6 directory there will now be a new directory called *Converter06*. You will need to copy this directory and all of the contents inside to your new computer. On the new computer, you should create a top-level directory called *Estates6* and then put the Converter06 directory (with all its contents) inside that new Estates6 directory. In this way you will effectively re-create the directory structure you had on your old computer, and the migration process will proceed smoothly.

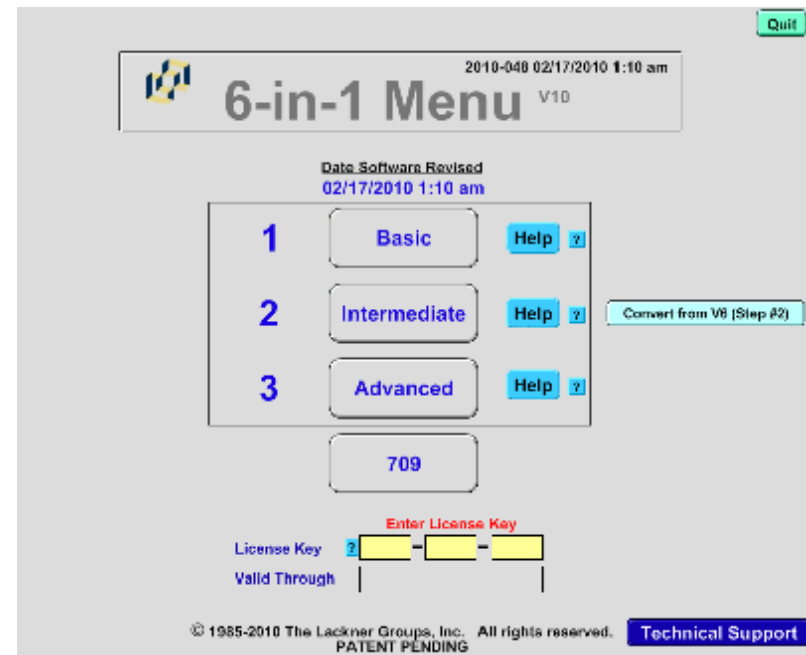
### 5. Run the data conversion and import process in the new V10 version of 6-in-1

On your desktop should be a new Lackner 6-in-1 v10 icon. Press that to start up the new v10 program. The first time you open v10, a relatively short copy process will initialize all the files. When completed, you will see the new 6-in-1 v10 Menu.



Note that your License Key may not yet be populated. This is normal. This information will be obtained during subsequent steps.

Press the **Convert from v6 (Step #2)** button to begin the conversion process.



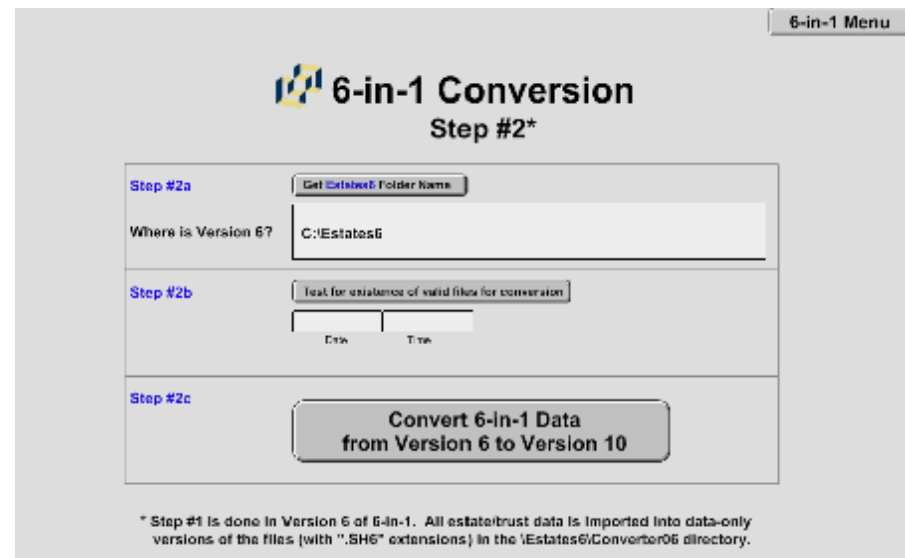
This will open the *6-in-1 Conversion Step #2* layout.

Make sure the Path to Estates6 is correct.

Then press the *Test for existence of valid files for conversion* button to make sure that the new v10 version of 6-in-1 can see the correct files. The date and time fields will populate if the test is successful.

Finally press the **Convert 6-in-1 Data from Version 6 to Version 10** button.

You will see a final dialog confirming that you want to proceed. Press the **Convert** button to begin the conversion.



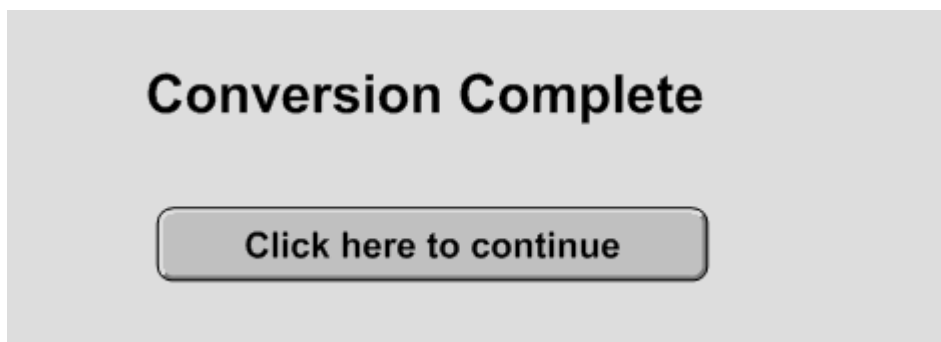
At this point a series of conversion messages will flash on your screen. This is completely normal.

### **Do Not Interrupt the Process!**

The first pass will display messages dealing with **Converting...** files. The second pass of work will display messages dealing with **Importing...** records into the files. Some of the imports will take some time, and may display progress bars that might give you an indication of how many more records are left in that file. Be aware that depending on your system usage, there may be many large files and you may see several such progress bars during the process.

**Again, do not interrupt the process! Go grab some coffee, have lunch, or take a walk.**

When the processing is completed, you will see a message on-screen that the conversion is complete:



---

#### 6. **Verify your data**

Now that you have successfully completed the steps, you should confirm that your data appears intact and complete. Look up a few files that you recently worked on and verify that things look as expected.

---

We appreciate your taking the time to follow these instructions carefully. We would appreciate any feedback that you would to share so that we may can improve the installation and conversion process.

#### **Thank you very much!**

We truly value you as our customer and wish you a productive 2010.

*- The entire team at The Lackner Group*